



**CERES**  
MALL





## ● INDEX

About Ceres Mall

Fast facts

Macro Map

Secondary Catchment

Micro Map

Site Location & orientation

Mall Map / Layout

Artist Impressions / Proposed Look & Feel



## ● ABOUT CERES MALL

**New Africa Developments will be developing a brand-new, upmarket, Regional Shopping Centre alongside the bustling Voortrekker Road in the heart of Ceres, Western Cape, consisting of approximately 22 000m<sup>2</sup> in retail space.**

Strategically positioned in Ceres, Ceres Mall will serve as the ultimate shopping destination for local residents, surrounding areas as well as tourists passing through. Its prime location ensures easy accessibility, drawing in shoppers from primary and secondary catchment areas. Whether you are a resident of Ceres itself or neighbouring communities, the mall will cater to your shopping needs with unapparelled convenience.

**Anchored by retail giants Checkers and Shoprite, Ceres Mall will furthermore boast an impressive array of desirable lifestyle brands including fashion, health & beauty, services, banking facilities, exciting restaurants and much more!**

The objective is to provide striking architectural designs, an inviting ambience, lush landscaping, spacious interiors, airconditioned environment, safe and secure on-grade parking, creating an atmosphere of sophistication and comfort. Ceres Mall will stand as a beacon of modernity and convenience and promises to redefine the shopping experience to residents and visitors alike.

## ● FAST FACTS

**Address:** Cnr. Voortrekker Str & Eselfontein Rd, Ceres

**GPS Coordinates:** S 33° 21' 50.5" E 19° 19' 26.2"

**Centre Classification:** Regional Shopping Centre

**Estimated Opening Date:** APRIL 2026



FREE  
WI-FI



PUBLIC  
TRANSPORT  
DROP-OFF  
FACILITY



INTERACTIVE  
ENTERTAINMENT &  
KIDS PLAY AREA



AMPLE  
FREE  
PARKING



AIR-  
CONDITIONED  
EXPERIENCE



SAFE &  
SECURE

**GLA**  
**±22 000m<sup>2</sup>**

**ANCHOR TENANTS**

**Checkers**

**SHOPRITE**

## ● LEASING ENQUIRIES

**CHARL SCOTT**

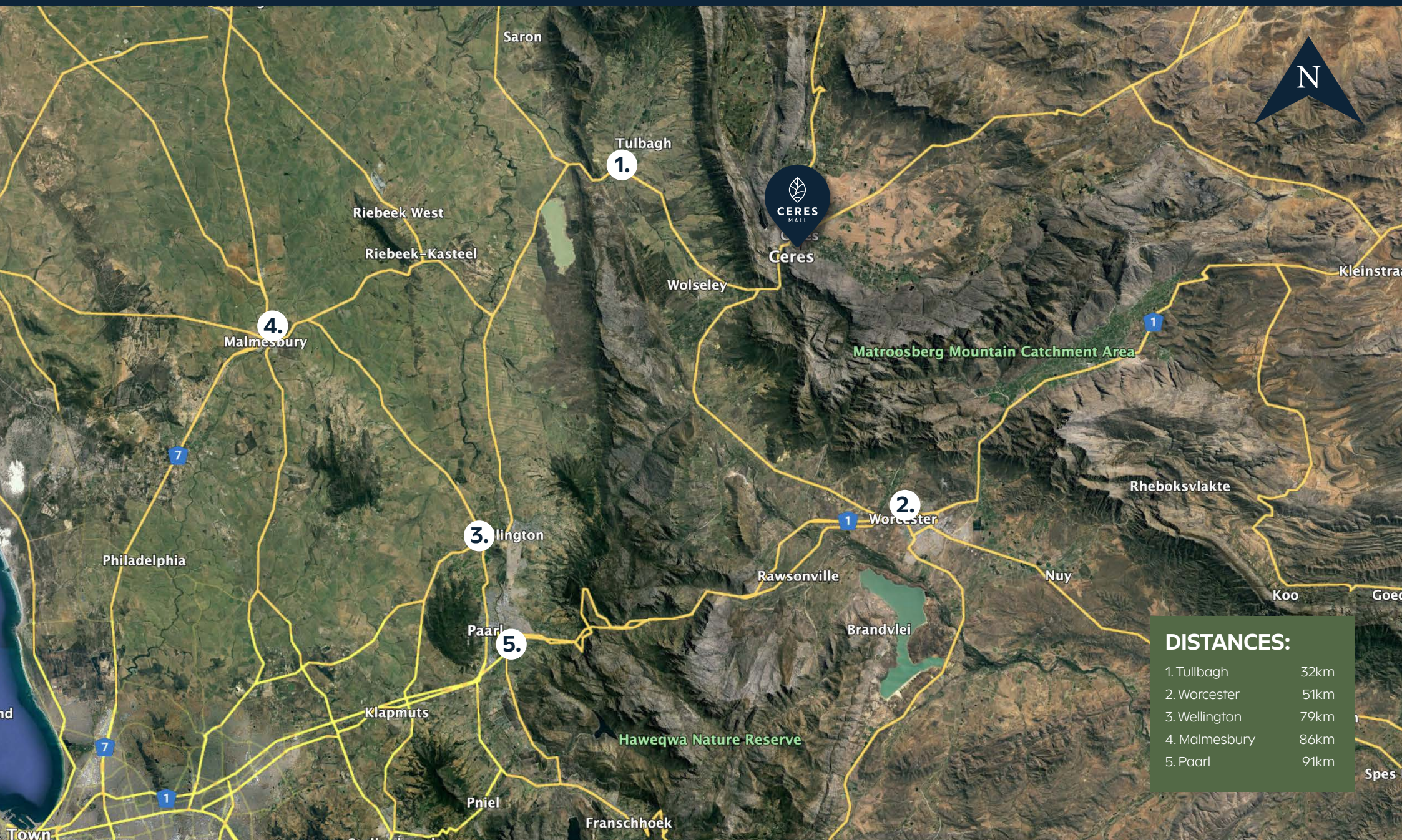
E: [charl@nad.bz](mailto:charl@nad.bz) | T: 012 662 3411 | C: 082 619 0245

**CHERENE VAN DER MERWE**

E: [cherene@nad.bz](mailto:cherene@nad.bz) | T: 012 662 3411 | C: 082 575 9593



# MACRO MAP





# CATCHMENT AREA





MICRO MAP



OTHER RETAIL:

- 1. De Keur Shopping Centre ±6 700m²
- 2. Shoprite Centre ±3 400m²
- 3. Ceres Square ±2 500m²

SCHOOLS:

- Charlie Hofmeyr High
- Bella Vista High & Primary
- Ceres Primary
- Mooi-uitsig Primary
- Morrisdale Primary
- Nduli Primary



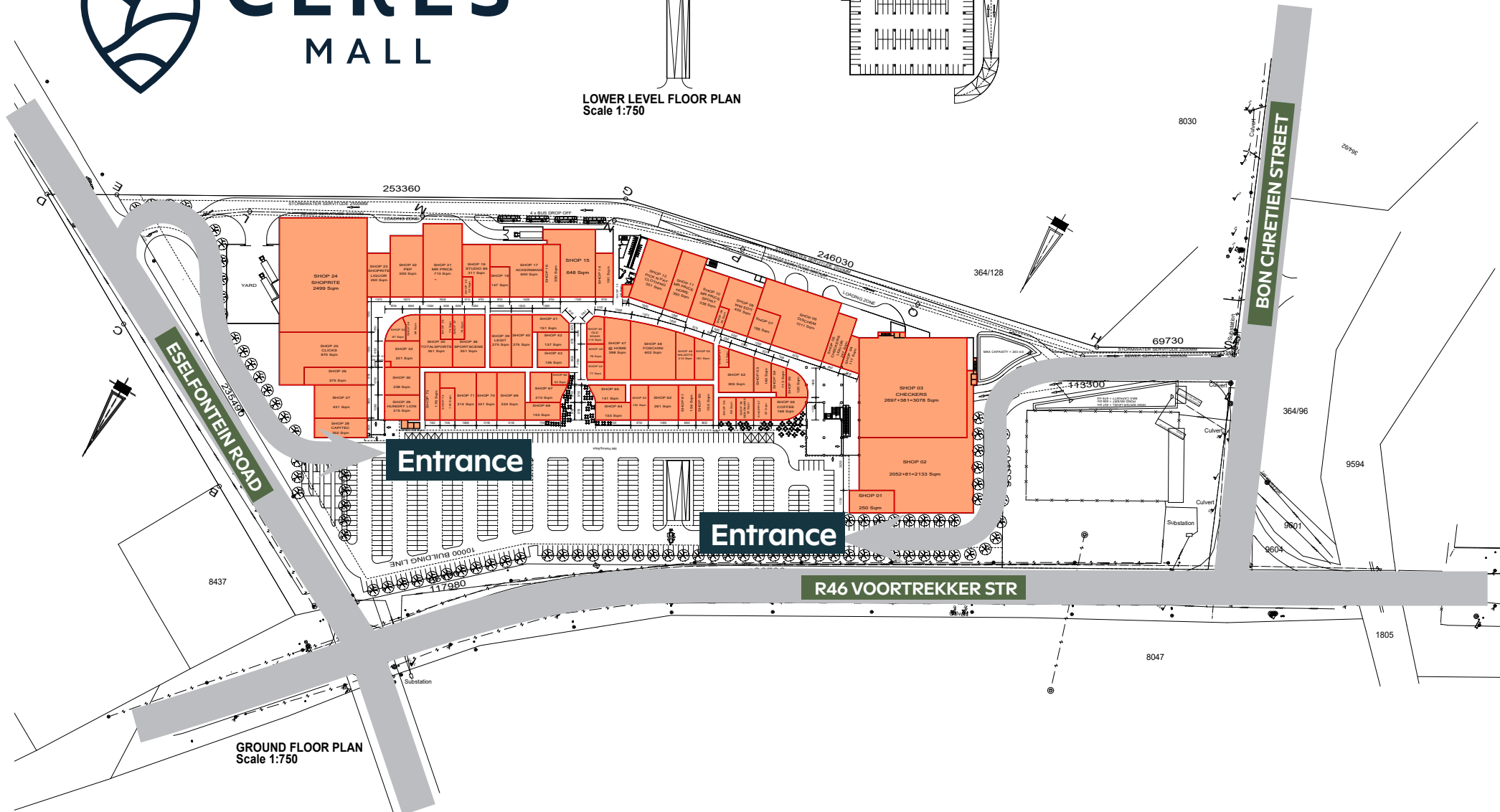
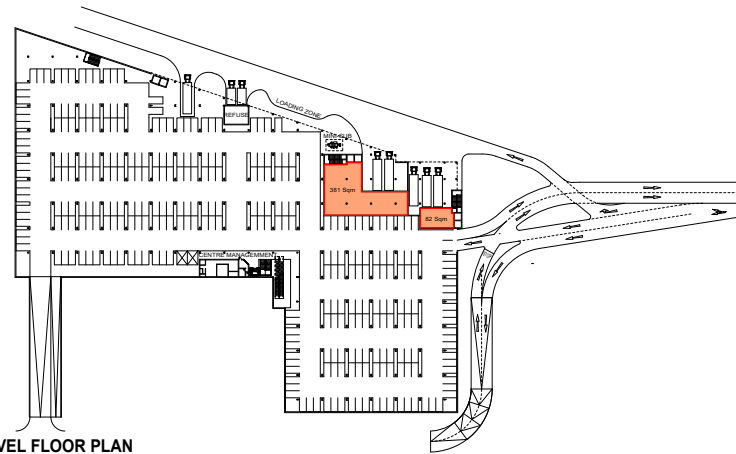
# ● SITE LOCATION & ORIENTATION







**LOWER LEVEL FLOOR PLAN**  
Scale 1:750





# ● PROPOSED LOOK & FEEL





# ● PROPOSED LOOK & FEEL

